

SAVIOR FINGERPRINT ACCESS & ATTENDANCE READER

11xx Series



- ▶ SAVIOR 1113
- ▶ SAVIOR 1114
- ▶ SAVIOR 1115



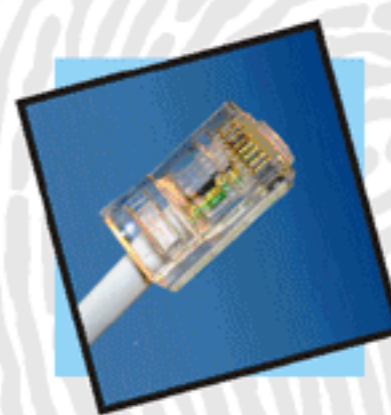
- ▶ SAVIOR 1103
- ▶ SAVIOR 1104
- ▶ SAVIOR 1105



Inbuilt Keypad



Inbuilt Operational Battery Backup



Inbuilt PoE



Employee Photo Stored in Reader displayed when Employee Marks his Attendance



Employee Recorded Message Played when Employee Marks his Attendance



Color Graphical Display



Common Technical Specifications for SAVIOR Fingerprint 11xx Series

FINGERPRINT Related Specifications

- Fingerprint Sensor Type - Thin Optical Sensor
- Fingerprint Resolution - 500 dpi @ 8bit per pixel
- Fingerprint sensor acquisition area - 14mm x 22mm
- Identification time less than 2 Secs for 90% cases.
- False Acceptance Rate (FAR) - Tuneable from Level 3 to 5 from SAVIOR Enrollment & Template Management Software Ver. 4.0
- False Rejection Rate (FRR) - Value dependant on FAR Setting and also kind of population. FRR is better with people who perform limited manual labour and have good quality fingerprints than with hard manual labour with damaged fingerprints.
- Reader prompts the user to MOVE UP, DOWN, PUT YOUR FINGER PROPERLY, when Finger is placed on Fingerprint Sensor. This reduces chances of finger being rejected.

READER MEMORY Related Specifications

- Data Memory for Transaction
 - 8 MB Flash Memory Chip for critical data.
 - 2 GB Transflash for customized Audio, Images, Fingerprint templates and others
- Transaction Memory : 1,30,000 Records
- For 1:N and 1:1, Record consists of User ID, Date, Time, Error Code, Transfer Flag

Common Application Specification for 1:1 & 1:N (without Smart Card)

- Positive User Masking Master - 2000 User ID.
- Negative User Masking Master - 1000 User ID.
- Call Back Masking Master - 40 User ID with individual message.
- Suspend Masking Master - 50 User ID.
- Reason Card Supported on Keypad : For Single (OD, Leave etc.) and Group Reasons (Bus Late, etc.)
- PIN based verification limited to 999 employees. Additional Employee Support is customization.

POWER SUPPLY Related Specifications

- Reader PoE Power adaptor Voltage DC 48 Volts 500mA.
- Reader Power consumption - 5 Watts
- Access control Operating Voltage DC 12 Volts 3A Maximum.
- Battery LiPolymer 2800 mAh, 3.7 Volts.

DISPLAY / AUDIO Related Specifications

- Audio Class D Mono 2.6 Watts Audio Power Amplifier.
- Display 2.8 inch TFT Transmissive 240x320 Pixel RGB LCD

HARDWARE Related Specifications

- Processor : 32 Bit ARM RISC
- RTC : Leap year programed, temperature compensated.

COMMUNICATION Related Specifications

- Ethernet Detection at Reader Level
- TCP/IP Server/Client Mode
- Power on Ethernet (PoE)

LOCK, TRIPOD, GATE Interface Related Specifications

- Door Access Time- configurable from 0.5 to 10 secs, in steps of 0.5 secs through SAVIOR Communication Software Ver. 10 or above
- Optional - Continuous Beep (If sensor supports) : In case Door opened forcefully or kept open for more than four seconds.
- Optional- Emergency Fire Exit Option at Computer Level to Open all / Specific Doors through Communication Software Ver 10 or above.
- Application and hardware Electronic Interface for Electromagnetic (EM) Locks available in SAVIOR Power Supply and Connection Box.
- Application Interface to Tripod, Gate, Turnstile, Electric Strike, Pivot Barriers, Vending Machine, Revolving Door available at free of cost. Hardware Electronic Interface to these equipment at extra cost.

GPRS Related Specifications

- GPRS Model has 1 SIM (GSM) Slot inbuilt.
- LCD Displays Signal strength of GPRS / GSM in form of icons.
- LCD Displays Reader IP Address, Public Static IP Address, APN and MAC Address at Power On.

GENERAL SPECIFICATION

- Operating Temperature : - 05°C ~ 50°C
- Relative Humidity : 20% ~ 95% (Non Condensing)
- Dimensions : 175 mm (L) x 90 mm (W) x 50mm (D) excludes GPRS Antenna
- Weight of Reader : 110x - 380 gms, 111x - 395 gms
- Enclosure : HR (Heat Resistant) & FR (Fire Retardant) Grade ABS

Colour range available on SAVIOR 11xx Series



Ivory White

- Item Code : 1103-01-W
- Item Code : 1104-01-W
- Item Code : 1105-01-W



Beige

- Item Code : 1103-01-B
- Item Code : 1104-01-B
- Item Code : 1105-01-B



Grey

- Item Code : 1103-01-G
- Item Code : 1104-01-G
- Item Code : 1105-01-G



Black

- Item Code : 1103-01-K
- Item Code : 1104-01-K
- Item Code : 1105-01-K

● 1103-01-W stands for Model 1103 Ver. 1, & Ethernet Enabled, Ivory White Color.

-- Please note that there may be slight colour variation in the actual product from the above printed pictures --

Manufactured by:



STJ ELECTRONICS PVT. LTD.

Regd. Office & Works: X-51, Okhla Industrial Area, Phase-2, New Delhi-110 020.

Ph.: +91-11-49816000 Fax: +91-11-4161 6300

Email: sales@saviorstj.com Web: www.saviorstj.com

SALES & SERVICE CENTRES

- AHMEDABAD ● AURANGABAD ● BADDI ● BANGALORE ● BHUBANESHWAR
- BHOPAL ● CHANDIGARH ● CHENNAI ● COIMBATORE ● GUWAHATI ● HARIDWAR ● HYDERABAD
- INDORE ● JAIPUR ● JALANDHAR ● JAMSHEDPUR ● KANPUR ● KOCHI ● KOLKATA
- LUCKNOW ● LUDHIANA ● MUMBAI ● MADURAI ● NASIK ● NAGPUR ● PANTNAGAR ● PATNA ● PUNE
- RAIPUR ● RAJKOT ● ROORKEE ● RUDRAPUR ● ROURKELA ● THIRUVANANTHAPURAM ● VIJAYAWADA

Authorised Stockist :



BS EN ISO 9001:2008
Certificate No.: FM 80372